

CONSTRUCTION STRUCTURE STRUKTUR STRUCTUUR Tufting 1/10" saxony
Tufté 1/10" saxony
Getuftet 1/10" saxony
Getuft 1/10" saxony

COMPOSITION DU VELOURS POLMATERIAL POOLMATERIAAL PILE MATERIAL 100% PA 6 IMPREL®

PRIMARY BACKING SUPPORT TRÄGERMATERIAL TUFTDOEK Non woven PES
Non tissé
Vlies
Felt

SECONDARY BACKING DOSSIER RÜCKEN TAPIJTRUG Action Back

PILE WEIGHT POIDS DU VELOURS POLEINSATZGEWICHT POOLGEWICHT Ca. 1.150 gr/m²

TOTAL WEIGHT POIDS TOTAL GESAMTGEWICHT TOTAAL GEWICHT Ca. 2.095 gr/m²

PILE HEIGHT EPAISSEUR DU VELOURS POLHÖHE POOLHOOGTE Ca. 5 mm

TOTAL HEIGHT EPAISSEUR TOTAL GESAMTHÖHE TOTALE DIKTE Ca. 7 mm

TUFT DENSITY NOMBRES DE POINTS NOPPENZAHL AANTAL PUNTEN Ca. 209 000/m²

PILE DENSITY DENSITÉ DU VELOURS POLROHDICHTE POOLDICHTHEID Ca. 0.157 g/cm³

CLASSIFICATION CLASSEMENT KLASSIFIKATION CLASSIFICATIE EN 1307
33 - LC4

UPEC U3s P3 E1 C0
Certification CSTB: 10/273

CASTOR CHAIR SUITABILITY CHAISE À ROULETTES STUHLROLLENEIGNUNG ROLSTOELGESCHIKTHEID EN 985
A: intensive use

STAIR SUITABILITY ESCALIERS TRAPPENGESCHIKTHEID EN 1963
A: intensive use

PERMANENTLY ANTISTATIC ANTISTATIC PERMANENT PERMANENT ANTISTATISCH PERMANENT ANTISTATISCH ISO 6356
≤ 2 kV

IMPACT NOISE RATING ISOLATION PHONIQUE TRITTSCHALLVERBESSERUNG GELUIDSISOLATIE ISO 140-8
26 dB ΔLw

SOUND ABSORPTION ABSORPTION PHONIQUE SCHALLABSORPTIONSGRAD GELUIDSABSORPTIE ISO 354
0.20 αw

THERMAL RESISTANCE RÉSISTANCE THERMIQUE WÄRMEDURCHLASSWIDERSTAND WARMTEDOORLAATWEERSTAND ISO 8302
0.09 m² K/W

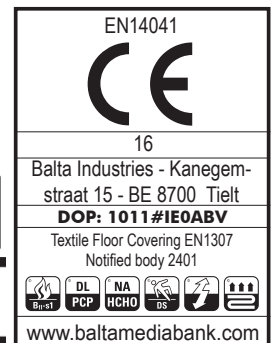
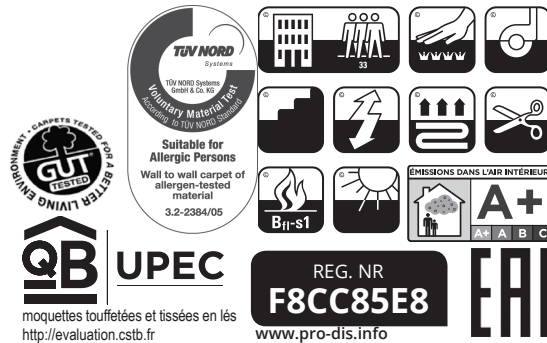
FASTNESS TO LIGHT SOLIDITÉ A LA LUMIÈRE LICHTECHTHEIT LICHTECHTHEID ISO 105-B02
≥ 5-6

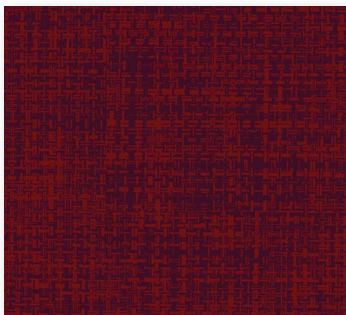
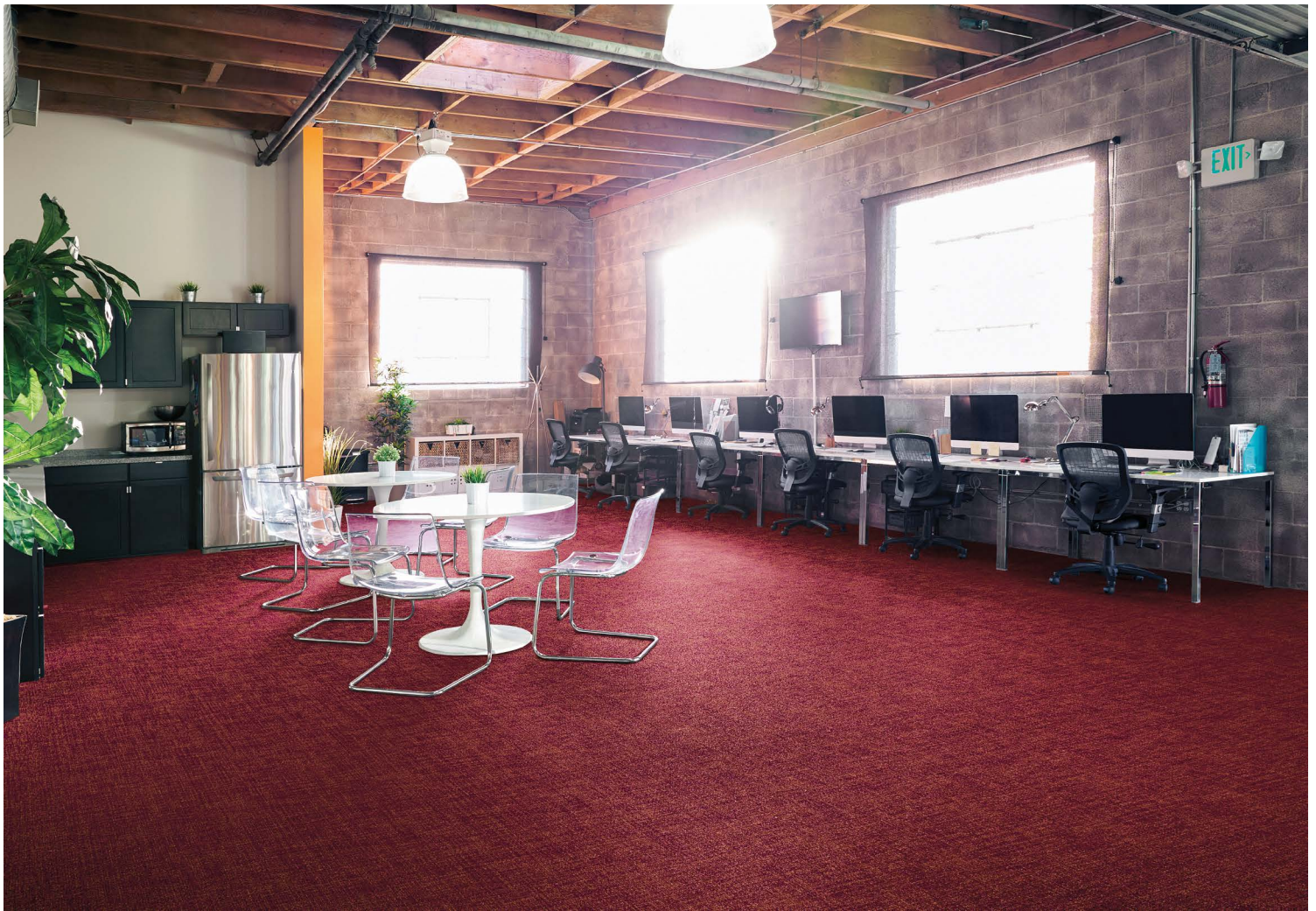
COLOUR FASTNESS TO WATER SOLIDITÉ À L'EAU WASSERECHTHEIT WATERECHTHEID EN ISO 105-E01
≥ 4-5

FIRE RESISTANCE COMPORTEMENT AU FEU BRENNVERHALTEN BRANDGEDRAG EN 13501-1
Bfl-s1 (if glued)

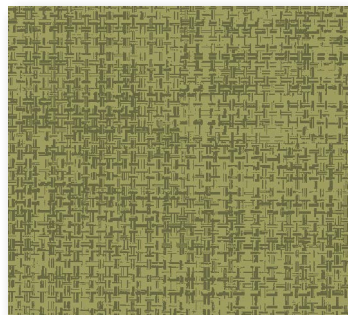
RUBBING FASTNESS SOLIDITÉ AU FROTTEMENT REIBECHTHEIT WRIJFECHTHEID EN ISO 105-X12
≥ 4

WIDTH LARGEUR BREITE BREEDTE EN ISO 3018
ca. 400 cm

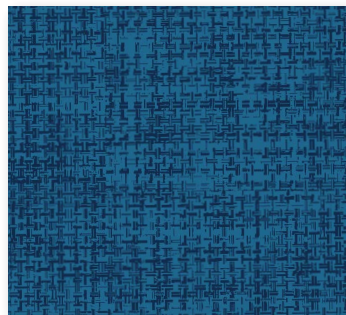




▲ 16



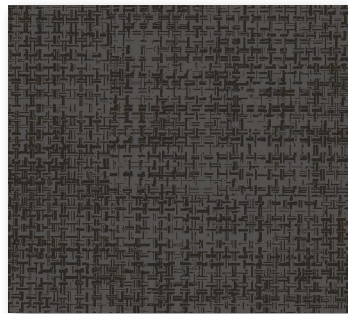
▲ 24



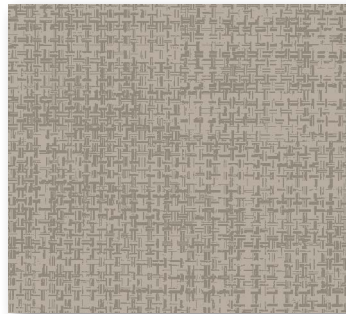
▲ 72



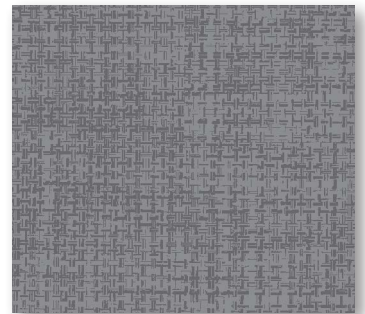
▲ 97



▲ 49



▲ 39



▲ 95

↔ **ca.99 X** ↓ **ca.126 CM**

arc edition
performance flooring